

# CHIAPPA® firearms

## OWNERS MANUAL

**TRIPLE  
CROWN**



**TRIPLE  
THREAT**

### **WARNING**

*Please read this manual carefully and do not use this pistol until you have fully understood all the safety instructions and its handling procedures. Should you require further information, do not hesitate to contact Chiappa Firearms, Ltd.*

# FIREARMS SAFETY

At **Chiappa Firearms®**, we believe that safe firearms handling is the most important consideration for anyone who uses firearms and ammunition. Please take a few minutes to thoroughly read and understand this instruction manual included with this shotgun.

## CAUTION

### FIREARMS SAFETY DEPENDS ON YOU!

- Don't rely on your gun's safety. Treat every gun as if were loaded and ready to fire.
- Never cross a fence, climb a tree or jump a ditch with a loaded gun
- Never load or carry a loaded gun until you intend to use it.
- Watch your muzzle so the other fellow doesn't have to.
- Keep guns and ammunition seperately and in locked storage.
- Don't shoot unless absolutely sure of your target and what is beyond it.
- Know the range of your gun.
- Always wear eye and ear protection when shooting.
- Always be sure the barrel is free of obstructions, and only carry ammunition specifically intended for the gun you are using.
- Do not alter or modify your gun. Have your gun regulatly checked by a gunsmith.

Serial No:.....

Date Purchased:.....

Purchased From:.....

## THIS MANUAL CONTAINS

1. Important warnings that should be read and understood before using this firearm. **SAFE GUN HANDLING IS YOUR PERSONAL RESPONSIBILITY AT ALL TIMES.** Disregarding warnings in this manual may result in injury or death to you and others and damage to property.

2. Directions and procedures for handling, loading, firing and unloading.

3. Instructions for care, cleaning, repair, and service of this shotgun.

This instruction and safety manual is designed to help you in learning how to properly use and care for your **Chiappa Firearms Triple Barrel** shotgun. Only when you are certain you have fully familiarized yourself with the function of your firearm should you practice loading, unloading and firing with live rounds of ammunition.

**This instruction manual should always accompany this firearm and be transferred with it upon change of ownership. Should you ever need to replace it, this manual is available FREE upon request from Chiappa Firearms®.**

## DISCLAIMER OF LIABILITY

**Chiappa Firearms®** and shall not be responsible for product malfunctioning or for physical injury, death or damage to property resulting from either intentional or accidental discharge of this firearm, its criminal or negligent use, improper or careless handling, unauthorized modifications or alteration, use of defective or improper or hand-loaded or (replaced) ammunition, or from its use for purposes or subsection to treatment for which it was not designed. For your safety, use only original high quality commercially manufactured ammunition in good condition that is appropriate to the caliber/gauge of your gun.

**Chiappa Firearms®** shall not be responsible for product or results from use of defective, improper or reloaded ammunition.

## WARNING - LEAD EXPOSURE

Discharging firearms in poorly ventilated areas, cleaning firearms, or handling ammunition may result in exposure to lead and other substances that may cause birth defects, reproductive harm, and other serious physical injury. Have adequate ventilation at all times. Wash your hands thoroughly after exposure. Shooting or cleaning guns may expose you to lead.

## WARNING

Prior to removing this gun from its packaging and prior to loading and firing, carefully and thoroughly read the entire instruction manual which gives advice on the gun's proper handling and functioning. Your safety and that of others (including your family) depends on your responsible compliance with that advice. If unfamiliar with firearms, seek supervised instruction.

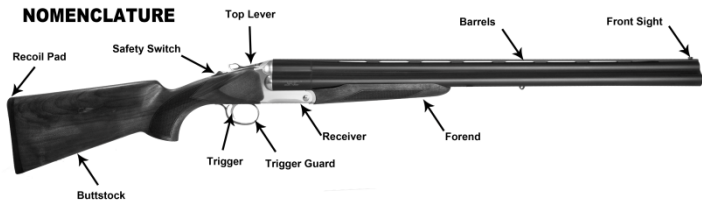
**FIREARMS SAFETY IS YOUR RESPONSIBILITY.**

## GENERAL SAFETY WARNINGS

1. Careless and improper handling of this gun could result in unintended discharge causing injury, death or property damage. Safety must be the first and constant consideration when handling a firearm and ammunition.
2. This shotgun was designed to function properly in its original condition. Alterations can make it unsafe. Do not alter any part or add or replace parts.
3. Shotguns should only be carried with the action open and chamber empty to prevent accidental discharge.
4. **Always handle and treat your gun as if it were loaded** so you never fire it accidentally when you think it is unloaded. Never take anyone's word it is unloaded. Always check it yourself with your fingers off the trigger and the gun pointed in a safe direction.

5. Never place your finger inside the trigger guard unless you intend to fire.
6. Water, snow, mud, excessive lubricating oil or grease or any other material can obstruct the barrel of your gun. Always check the barrel of your firearm for obstruction before loading and firing. Clean a fouled gun immediately to ensure its correct and safe function.
7. **Keep the gun's muzzle pointed in a safe direction at all times.** Never let the muzzle of a firearm point at any part of your body, another person or at anything you do not intend to shoot. Always be certain of your target before firing.
8. **UNLOAD ALL FIREARMS WHEN NOT IN USE. NEVER STORE A LOADED FIREARM.** Firearms and ammunition should be safely stored separately so that they are inaccessible to children or unauthorized users.
9. Always make sure your gun is not loaded before cleaning, storing, or handing it to another person.
10. Always wear safety glasses while shooting to protect your eyes from injury by gun powder, gas, lubricant, dirt or metallic particles, carbon residue, sparks or other debris.
11. Always wear ear protection when shooting, especially on a range. Without ear protection the noise from your gun and other guns close to you, could leave a "ringing" in the ears for some time after firing. Repeated exposure to shooting noise could result in permanent hearing loss.
12. Never climb a tree, fence or wall while carrying a loaded firearm.

13. Don't shoot at a hard surface or water. A ricochet may travel in unpredictable directions to strike you or an object you cannot see.
14. Firearms and alcohol do not mix. Never drink alcoholic beverages or take drugs before or during shooting, as this constitutes criminal disregard for your safety and that of others. Never use a gun while you are taking medication unless you have checked with your doctor to ensure your fitness to handle your gun safely.
15. If you have any doubts about your ability to handle or use this shotgun safely, seek supervised instruction.
16. **Horseplay has no place around firearms. Guns can't think - you can!**
17. Remember, safety is your responsibility, Be a safe shooter.
18. **FOLLOW THE LAW:** Obey all local, state and federal laws regarding storage, shooting and transporting your firearm.



## DIRECTIONS FOR ASSEMBLY

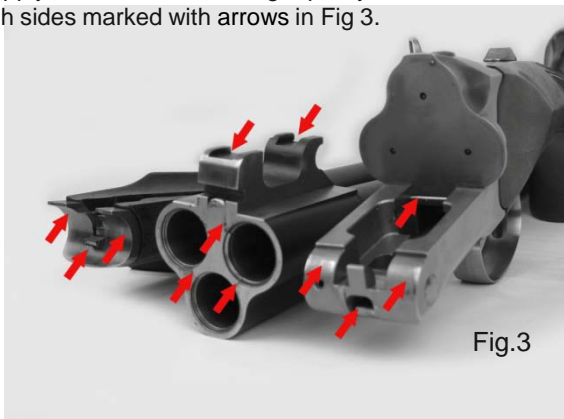
**WARNING :** READ AND UNDERSTAND ALL THE INSTRUCTION AND WARNINGS IN THIS MANUAL BEFORE USING THIS SHOTGUN.

It is important to learn the parts of your shotgun and their functions before using this firearm. Before assembling the shotgun, make sure there are no shot shells in the chambers.

1.Remove the forend from the barrel by pulling the forend release lever (Fig. 1) away from the forend and pivot the forend away from the barrel. (Fig. 2)



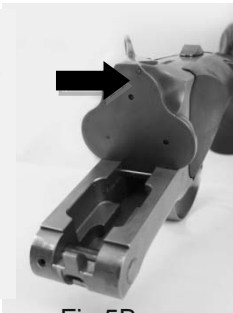
2.Apply a small amount of high quality lubricant to all surfaces on both sides marked with arrows in Fig 3.



3. Attach barrels to the action by pushing the top lever to the right and engaging the dual hinge pin surfaces at the forward portion of the receiver, with the hinge pin bearing notches on each side of the barrel. Hold the barrels with the muzzle at a downward angle with respect to the receiver. Once the bearings are properly seated, lift up on the barrels and close the action. (Fig. 4)



4. When the barrels are closed properly against the receiver, the Top Lever will return toward the center of the action. (Fig. 5A)



5. Attach the forend to the barrels by placing the metal part of the forend assembly against the receiver. Pivot forend toward the barrel to the closed and locked position against the barrels. (Fig. 6)



## OPERATING INSTRUCTIONS

**WARNING: READ AND UNDERSTAND ALL INSTRUCTION AND WARNINGS IN THIS MANUAL BEFORE USING THIS SHOTGUN. IT IS IMPORTANT TO LEARN THE PARTS OF YOUR SHOTGUN AND THEIR FUNCTIONS BEFORE USING THIS FIREARM.**

### TOP LEVER

The Top Lever controls the locking of the breech of the barrels to the receiver. To open the gun, move the Top Lever to its extreme right hand position and ease down the barrels. The Top Lever will remain in the "OPEN" position until the barrels are again closed and locked. The Top Lever will then automatically return toward the center position (Fig. 5A) With the barrel removed from the receiver the Top Lever can be returned to the center position by depressing the Top Lever Latch. **(Fig. 5B) When the barrels are removed from the receiver, the Top Lever should always be returned to the center position to prevent damage and especially during transportation.**

### SAFETY SELECTOR

Safety is first and foremost when handling any firearm. To engage the safety, slide the Safety Button fully rearward. There is a visible "S" to help guide you. To disengage the safety in order to fire the shotgun, slide the Safety Button fully forward. Always keep the safety in the "Safe" position until you are ready to fire the shotgun.

Triple Crown shotguns are equipped with only a manual safety which requires the Safety Button to be manually moved rearward to the "Safe" position to engage the safety from the fire position.

## TWO PIECE STOCK (Triple Threat Only)

On Chiappa Firearms® “Triple Threat” shotguns, the stock is a two piece stock with the option of removing the shoulder stock portion and allow the use of a modified “Pistol Stock” for special applications. To remove the rear portion of the stock, use a “Phillips” style screwdriver and remove the buttplate. (Fig. 7A) & (Fig. 7B)



Fig.7A



Fig.7B

Using the 6mm T-Handle wrench supplied with Triple Threat Models, remove the base screw holding the shoulder portion of the stock (Fig 8) Once the screw is removed, the rear portion of the stock may be separated and stored for future use. Fig. 8A



Fig.8



Fig. 8A

## MULTI CHOKE TUBES

This **Chiappa Firearms®** triple barrel shotgun is equipped with interchangeable multichoke tubes. The notches on the top of the tube can identify the choke tube. (Fig. 9)

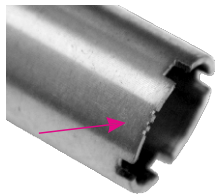


Fig.9

### WARNING: STEEL SHOT USAGE

Steel shot (up to and including size 2 shot) should not be fired through your shotgun with a choke tighter than modified. If shot larger than #2 is used, the tightest choke used should be an improved cylinder.

### CHOKE IDENTIFICATION

<u>CHOKE</u>	<u>MARKS</u>	<u>CHOKE</u>	<u>MARKS</u>
Cylinder	IIIII or CYL	Modified	III or M
Skeet	IIII or S	Imp. Modified	II or IM
Imp. Cylinder	IIII or IC	Full	I or F

### WARNING: PERIODICALLY CHECK TO BE SURE THE CHOKE TUBES ARE TIGHT & PROPERLY SEATED.

Before changing a choke tube, always make sure that your shotgun is unloaded and the safety is in the "Safe" position. To change the choke tubes, use the choke tube wrench. The wrench and additional chokes are supplied in the shotgun box. Insert the wrench into the recessed space of the tube and unscrew counterclockwise. Insert the desired choke tube and seat with the wrench in the reverse, or clockwise, direction. (Fig. 10)



Fig.10

**WARNING: NEVER FIRE YOUR SHOTGUN WITHOUT A CHOKE TUBE INSTALLED.** This could damage the choke tube threads on the inside of the barrels.

## AMMUNITION

Use only high quality factory ammunition specifically designed for your gauge of shotgun. If the barrel is marked as a 3" chamber, it will accept both 3" and 2 ¾" shotshells.

All **Chiappa Firearms** shotguns will accommodate steel shot. However, steel shot should not be used with any choke tighter than a modified choke (flush mount or external). Do not use steel shot with improved modified, full or extra full choke tubes (flush mount or external).

**WARNING:** ACCIDENTAL LOADING AND DISCHARGE OF SHELLS OF THE WRONG GAUGE IN YOUR GUN CAN RESULT IN DAMAGE TO YOUR GUN AND INJURY TO THE SHOOTER OR OTHERS.

*Only carry the proper ammunition with you when shooting.*

## LOADING

**WARNING: READ AND UNDERSTAND ALL INSTRUCTIONS AND WARNINGS IN THIS MANUAL BEFORE USING THIS SHOTGUN.** It is important to learn the parts of your shotgun and their functions before using this firearm. Be sure of your target and what's beyond before firing.

To load your **Chiappa Firearms**® triple barrel shotgun, be sure the safety is in the "Safe" position, open the action by moving the top lever to the right. This will cause the lock to disengage and allow the barrels to pivot downward exposing the chambers. Insert shotshells of the appropriate gauge and size into the chambers.(Fig.11)  
When you are finished loading the chambers, close the breech by pivoting the barrels against the action. The top lever will return toward the center position when the breech is closed and locked.



## FIRING

After you have inserted the shotshells into the chambers and have closed and locked the breech, your shotgun is ready to fire. Disengage the safety by pushing the safety button fully forward. Pull the trigger and the right barrel will fire.

After firing, allow the trigger to return to the fully forward position before firing again. Pulling the trigger for the second time will fire the left barrel. The third pull of the trigger will fire the top barrel. Always keep the shotgun pointed in a safe direction and the safety in the “safe” position.

**WARNING: READ AND COMPLETELY UNDERSTAND ALL INSTRUCTION AND WARNINGS IN THIS MANUAL BEFORE USING THIS SHOTGUN.**

## UNLOADING

Before unloading, check to assure that the safety is in the “Safe” position. Open the action by pushing the top lever all the way to the right and pulling the barrels downward fully. The extractor will elevate any loaded or unfired shells in the chambers for easy removal.



## DISASSEMBLY

**WARNING :** READ AND FULLY UNDERSTAND ALL INSTRUCTIONS AND WARNINGS IN THIS MANUAL BEFORE USING THIS SHOTGUN.

Disassemble, clean and oil your shotgun at regular intervals or when it has been exposed to sand, water or other adverse conditions.

To disassemble your shotgun:

- 1.Remove the forend by pulling the forend release lever away from the forend, and pivoting the forend away from the barrel.
- 2.Push the top lever to the right to disengage the action.
- 3.Remove the barrel assembly.

**Further disassembly is not recommended and not necessary for regular maintenance. (Fig.13)**



Fig.13

## CAUTION

Always unload your gun and store it and ammunition separately in locked receptacles out of children's reach and sight, minimizing the risk that the gun and ammunition could be easily available for loading and firing.

**USE YOUR SHOTGUN CAREFULLY AND SAFELY.**

## **WARRANTY CONDITIONS**

The manufacturer guarantees that our products are scrupulously checked against defects in materials, workmanship and aesthetic and functioning problems. If you find a defect in one of our products, you should immediately contact the DEALER/SHOP/GUNSMITH where you have bought your gun. The seller will indicate the conditions for the repair, which will be either made directly by them or through our assistance.

**ATTENTION: End users are not allowed to ship any gun directly to Chiappa Firearms, Ltd. for repair, either under guarantee or against payment without a Return of Merchandise Authorization number (RMA).**

The manufacturer guarantees, for a year after the purchase date, the free substitution of parts for defects which have been found during use: wear of parts which shouldn't be subject to wear, or excessive wear of parts subject to wear. The customer must provide evidence of the purchase date with a receipt or other valid proof.

In the event a defect which is covered by this guarantee is not repairable, The manufacturer may provide a free substitution of the product.

**THE MANUFACTURER RESERVES THE RIGHT OF DEFINING THE TYPE OF DEFECT OF THE FIREARM, AND THEREFORE TO STATE WHETHER THE DEFECT IS COVERED BY GUARANTEE**

The manufacturer's decision will be fair but final. The manufacturer will be allowed a timing of 60 days for repair under guarantee, and 90 days for free substitution. Should the manufacturer become aware of a defect of a product during the guarantee period, the defective part will be replaced free of charge.

The guarantee does not cover parts subject to wear and corrosion. For assistance in obtaining a RMA (Return of Merchandise Authorization) contact the dealer where the product was purchased, should you require further assistance, contact Chiappa Firearms, Ltd. at (937) 835-5000 or by email at: [service@chiappafirearms.com](mailto:service@chiappafirearms.com)

#### **ATTENTION**

**Delivery expenses to and from the service center are not covered by the guarantee and is the responsibility of the customer.**

#### **THE GUARANTEE IS VOID IF**

- Inadequate ammunition has been used (any ammunition but those commonly on sale, reloaded ammunition, different from caliber and specification indicated on the firearm barrel)
- The firearm failed to be provided proper maintenance and cleaning
- The firearm has been modified without our prior consent
- Unauthorized, inadequate or incorrect repairs have been carried out
- Non original spare parts were used
- Parts subject to wear and corrosion
- Damage (improper use of the gun by the user)
- Expired guarantee

**In the above cases the repair, if carried out, will be charged to the customer**



## Procedure for the use of warranty

REGISTER your firearm in the proper section of our website:

<http://www.chiappafirearms.com/registration>

CONTACT the gunshop where the product was bought, or contact Chiappa Firearms, Ltd. You will receive an RMA number and the instructions to return the gun.

FILL IN the attached form, which will accompany the return firearm. Don't forget to include the RMA number, a description of the defect and a copy of the proof of the purchase indicating the purchase date.

SHIP the weapon to the gun shop (or to the service center) in its original packing, according to the instructions you have received.

**ATTENTION: the returned firearm must be protected with adequate packaging; any damages occurred during transportation and handling will be the customer's responsibility**

**This instruction manual must always follow the firearm, including during any change of ownership**

## **WARNING!**

Discharging firearms in poorly ventilated areas, cleaning firearms, or handling ammunition may result in exposure to lead and other substances known to cause birth defects, reproductive harm, and other serious physical injury. Have adequate ventilation at all times. Wash your hands thoroughly after exposure. Shooting or cleaning guns may expose you to lead.

### **About Chiappa Firearms, Ltd.**

[Chiappa Firearms, Ltd.](#) is part of the “Chiappa Group” and was founded in 2006 and is one of the nation’s leading manufacturers and importers of high-quality firearms for the commercial sporting market. Chiappa Firearms, Ltd. is located in Dayton, Ohio and is the North American distributor of Armi Sport Chiappa, located in Brescia, Italy. Starting in 2013 Chiappa Firearms, Ltd. began importing both shotguns and handguns from leading firearm manufacturers in Turkey who have been setting the standard in modern firearm production for the past several years.



## **CHIAPPA FIREARMS TRIPLE CROWN**

*The Chiappa Triple Crown features a side by side barrel configuration with the third barrel on top giving the shooter a single barrel sight plane with multiple barrel performance. Each barrel is machined to accept Rem-Choke style choke tubes and each shotgun includes 5 choke tubes ranging from Improved Cylinder to Full Choke. The thunder is released with a single mechanical trigger that provides simplistic reliability and lightning fast speed for follow up shots. Keeping the design simple, Chiappa chose mechanical extractors for the first production release which will be available in 12 gauge with 3" chambering. The Triple Crown features a 28" barrel and weighs in at a surprisingly light and well balanced 8.5 lbs. And if that is not enough, the Triple Crown has a rowdy relative that is sure to grab your attention with an 18.5" barrel and boasting the name of the Triple Threat!*



**CHIAPPA**  
firearms

**Chiappa Firearms, Ltd.**

**6785 W. Third St. - Dayton, Ohio 45417**

**Telephone (937) 835-5000 Fax (888) 705-4570**

**email: [info@chiappafirearms.com](mailto:info@chiappafirearms.com)**